

The Full Story of Pueblo Grande (or at Least a Few Chapters)

Free Online Presentation by
Laurene Montero

Archaeologist,
City of Phoenix

Online via Zoom (See link below)

Southern half of excavated Pueblo Grande platform mound "House 90," looking south, August 11, 1939; photographer Goddu

Thursday August 18, 2022  **7 to 8:30 p.m. Arizona Time**
(Same as Pacific Daylight Time)

Pueblo Grande is one of the last remaining precontact Hohokam villages with an intact platform mound – or *va'aki* – in Arizona's lower Salt River valley. Its importance to descendant Tribal communities is recognized today, and Pueblo Grande continues to yield a wealth of information regarding the past and its connection to the present. Excavation projects in almost 80 percent of this village have unearthed many archaeological features, providing information for compiling a new research database.

The continued challenge to preserve, research, and interpret pieces of this important place in the face of a changing urban landscape has required creativity, collaboration, and devotion on the part of a diverse group of volunteers and professionals. This Third Thursday presentation will combine a brief history of the archaeology of Pueblo Grande, its role in the surrounding irrigation community archaeologists call Canal System 2, and its value as a resource for continued preservation archaeology.

To register for the Zoom program go to

https://us06web.zoom.us/webinar/register/WN_ynVTuQ14QLSONrcrosWEYw.

For more information contact Old Pueblo at **520-798-1201** or info@oldpueblo.org.

The Full Story of Pueblo Grande . . .



This month's guest presenter Laune Montero received her MA in Anthropology from Arizona State University in 1989 and has been a professional archaeologist in Arizona since then. Her work experience includes several firsts – she was the first Archaeologist for Arizona State Parks and for the Salt River Pima-Maricopa Indian Community. She also managed and directed cultural resources groups for several private corporations.

Since 2011, Laune has served as City Archaeologist for Phoenix, working with city departments, Tribal governments, and others (private developers) to ensure that archaeological work in Phoenix is appropriately and respectfully accomplished. Together with Pueblo Grande Museum Research Associate and a team of volunteers, Laune has been conducting research on legacy projects resulting in several publications.

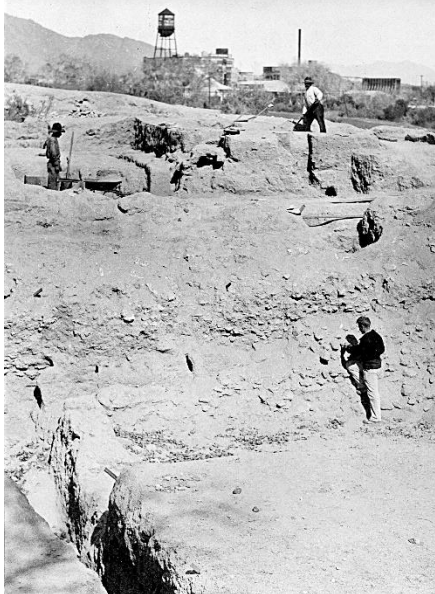
Her work with Phoenix has led to a variety of treasured experiences and friendships, and she is grateful for the support of our unique cultural resources community. Laune is advisor to the Phoenix Chapter of the Arizona Archaeological Society, serves on the City of Tempe Historic Preservation Commission and the Arizona Archaeological Council's Arizona Heritage Policy Subcommittee, and is an editorial advisor for the Journal of Arizona Archaeology.

1939 or 1940 photo looking northwest at the Pueblo Grande platform mound's southeast corner showing cross section of excavated talus that came off of mound's east side, crew members excavating, and sign "Do not walk on walls or in trenches"



January 9, 1935 view of a double row of postholes north of the Pueblo Grande platform mound's "storage room" with museum building, automobiles, and Grand Canal in background

Undated photo looking north-north-east across the middle south portion of the Pueblo Grande platform mound showing crew members posed and what appears to be a post-reinforced adobe wall along the mound's south retaining wall – either a buttressing wall or an earlier wall between masonry walls



1929-1934 era photo looking east at two men excavating a test trench and a cleared area at south end of the Pueblo Grande platform mound; Tovrea cattle stockyards in background

Historical photos courtesy of Lindsey Vogel-Teeter and Laune Montero, Pueblo Grande Museum, City of Phoenix
Page 1 photo sepia tone and tree coloring added by Old Pueblo Archaeology Center

Old Pueblo Archaeology Center

**For more information contact
Old Pueblo Archaeology Center at
info@oldpueblo.org or 520-798-1201**