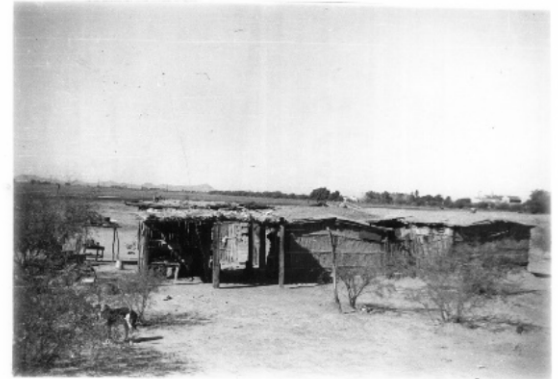




Old Pueblo Archaeology Center Presents:

Tucson and Marana Yoeme (Yaqui Indian) Communities

**A Tour to Historic Cultural Sites
with Yoeme Historian Felipe S. Molina
Saturday February 6, 2021, 8 a.m. to 1 p.m.**



Typical home in Yoem Village, Marana, Arizona, 1936
Homes were built with railroad ties, saguaro cactus ribs, and mud, with sheet metal roofing.
R. B. Spicer photo courtesy of Felipe Molina

The Yoeme (Yaqui Indians) established several settlements in Arizona to escape the Mexican government's war with the Yoeme in the state of Sonora in the 1890s and early 1900s. From 1880 through the early 1900s, after Mexico began deporting Yoeme from their homeland in Sonora to other Mexican states, a steady stream of Yoeme migrated into southern Arizona. By 1908 hundreds of them had fled to the U.S. to settle permanently and in the 1920s more came to seek political asylum and join existing southern Arizona Yoeme settlements. By 1940 there were about 3,000 Yoeme in Arizona, mostly living in the well-established villages of Libre (Barrio Libre) and Pascua in Tucson, Yoem Pueblo and Wiilo Kampo in Marana, and others near Eloy, Somerton, Phoenix, and Scottsdale. After granting federal recognition to the Pascua Yaqui Tribe, in 1978 the U.S. Government established the Pascua Yaqui Indian Reservation (originally called New Pascua).

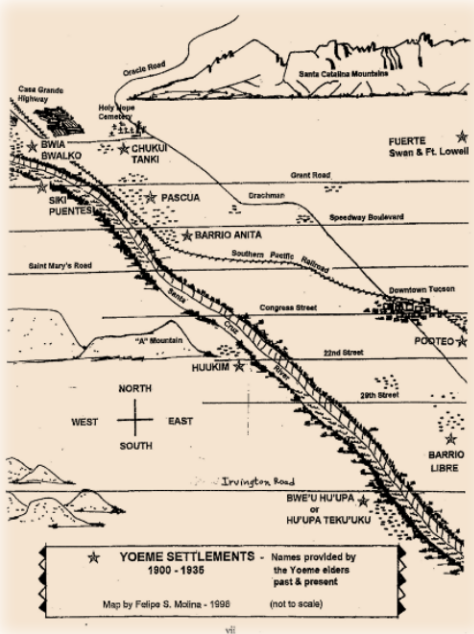
This tour will visit places in the Tucson and Marana areas settled historically by Yoeme who fled Mexico. Stops will include the Tucson-area sites of Bwe'u Hu'upa Village, the San Martin Church and plaza in the 39th Community (Barrio Libre), Pascua, and possibly the San Ignacio Church and plaza. Then we will drive to Marana and stop at the sites of Ili Hu'upa, Yoem Pueblo (including the San Juan Church and plaza), and Wiilo Kampo. Along the way, Mr. Molina may point out the Bwia Bwalko (Soft Earth) site east of the Santa Cruz River and Chukui Kawi west of Yoem Pueblo. Provide your own transportation. Wear sturdy shoes and bring drinking water.

Tour Leader Felipe S. Molina, a Yoem Pueblo resident, was taught the indigenous language, culture, and history of the Yoemem (Yaquis) by his maternal grandfather and grandmother, his grandmother's cousin, and several elders from Tucson's original Pascua Village. After retiring from teaching he completed manuals on these topics for the Pascua Yaqui Social Service Department and helped document Yoeme family stories of Guadalupe Village for the Pascua Yaqui Tribe Enrollment Department.

Mr. Molina has co-authored the *Yoeme/English Dictionary* with Herminia Valenzuela and David Shaul; *The Old Man of the Fiesta* with James Griffith; *The Yaquis and Their Place* with Octaviana Salazar and Herminia Valenzuela; *Maso Bwikam - The Yaqui Deer Songs* and *The Coyote Songs* with Larry Evers; and *Yoeme Ethnobotany* with Richard Felger. He teaches traditional songs for the *maaso* (white-tailed deer) dance to Yoeme youth who will be the Arizona's Yoeme communities' future Deer Dance singers.



Felipe Molina
Photograph by Steven Meckler



Carpooling is impractical after tour starts
The trip starts in southwestern Tucson and ends 28 miles away in Marana, so it is rather impractical to arrange carpools at the tour starting place unless a driver who is willing to take riders plans to return to the beginning point after leaving Marana.

Contact Old Pueblo Archaeology Center at 520-798-1201 or info@oldpueblo.org to register and obtain meeting place directions.

**\$30 donation (\$24 for Old Pueblo Archaeology Center and Pueblo Grande Museum Auxiliary members)
Donation is due 10 days after reservation request or by 5 p.m. Wednesday February 3, whichever is earlier.**

Cancellations made 30 days or more before departure will not be charged. Cancellations 8 to 30 days before departure will be refundable at 50% of the donation paid unless the cancelled space can be filled.

Cancellations 0 to 7 days prior to departure date are not refundable.

Flyer date
February 11, 2020